

# BWPS WEEKLY NEWS

BANKSTOWN WEST PUBLIC SCHOOL

*Messages from Mrs Benson:*

## HIGH SCHOOL STUDENTS

While we love catching up with our ex-students, we respectfully request that all high school students/elder siblings who come onto school premises, whether ex-students or not, be with a parent or carer. Unfortunately, we have had some issues in the past which has led to this practice being implemented.

## BIRTHDAYS

We love to celebrate your child's birthday but request that we do so with either ice-blocks, similar to the picture, ordered from the canteen or store bought prepackaged individual cupcakes, similar to the ones in the picture.

Due to children's allergies, lolly bags or other cakes etc can not be accepted.



Ms Katie, from the canteen, may be contacted between school hours on 0410622441. Please do not ring the front office as we do not have an internal phone in the canteen.

# PARKING

We understand that parking around all schools can be problematic. Please leave yourself plenty of time or better still walk with your child, if possible.

May I remind parents please not to park over neighbour's driveways. Our neighbours understandably become upset and it can lead to issues which we all need to avoid. Please do not move neighbour's bins either, as we have had bins not picked up in the past, after a parent moved them to park their car.

Rangers do regularly patrol both William and Dutton Streets and I am sure everyone wishes to avoid losing points and being issued with a hefty fine.

<p><b>Disobey 'No Parking' Sign</b></p>  <p><b>Fine = \$227*</b> &amp; Lose 2 Points</p> <p><b>'KISS &amp; DROP' ZONE</b> ONLY stop to drop off or pick up Stay within <b>3 metres</b> of your car Stay less than <b>2 minutes</b></p>  <p>Section 168 Road Rules 2014</p>	<p><b>Disobey 'No Stopping' Sign</b></p>  <p><b>Fine = \$410*</b> &amp; Lose 2 Points</p> <p><b>DO NOT STOP</b> for ANY reason</p>  <p>Section 167 Road Rules 2014</p>
<p><b>Child or Passenger Not Restrained</b></p>  <p><b>Fine = \$410*</b> &amp; Lose 3 Points</p>	<p><b>Driver Uses Mobile Phone When Not Allowed by Law</b></p>  <p><b>Fine = \$544*</b> &amp; Lose 5 Points</p>

# SCHOOL HOURS

The gates on both William St and Dutton St open in the morning at 8:20am. Children are then asked to sit on the silver seats outside the Kinder rooms until 8:30am when the morning bell rings. Parents sending their children at 8:20 do so on the understanding that there is no playground supervision until 8:30am. This is when direct playground supervision begins.

Of an afternoon both gates open at 2:40pm when parents may enter and wait for their children. After 3:10pm children must be collected by parents from the front Office.

If, for any reason, you are running late please ring the office directly, do not Dojo teachers as they may not receive the message in time.

# ATTENDANCE/EXEMPTIONS

We still need to follow NSW Health COVID guidelines of keeping children home who have cold/flu like symptoms and administering a RAT. Please continue to log a positive case through NSW Health and ring the school if your child is COVID positive. If this is the case a generic note will go out to the children within the class as a precaution. Thank you for your continual support.

It is, as we know, a fine line with following guidelines and best practice and supporting regular attendance.

Regular attendance is vital for children to succeed and fulfill their full potential. The NSW Department of Education states that children should attend school at least 90% of the time (this equates to 9/10 school days). Regular attendance means children are engaged in their class work and have positive social interactions with friends in the classroom and playground.

In line with the Department regulations, teachers mark online attendance records every day. If a child has a satisfactory explanation or medical certificate they are marked as sick or leave (a funeral/unavoidable specialist appointment etc). If an explanation is received for a child's absence for the day but is unsatisfactory, the records are marked as explained but unjustified. Unjustified reasons may include siblings or parents are unwell, child slept in and visiting relatives or family.

Children who are late are marked as partial attendance with the time of arrival notated.

Parents are requested to make doctor/ dentist appointments etc outside of school hours or during the holidays.

Our school target is to increase our attendance rate and there are lots of positive incentives including the weekly assembly drawer and individual targeted attendance programs.

With twelve weeks of school holidays, parents are requested to take vacations during school holiday times. It is a legal requirement that parents apply for extended leave through the Office. Leave will not be granted unless under exceptional circumstance, but the school does need to keep a record to ensure children are safe and monitored.

## Days missed = years lost

A day here and there doesn't seem like much, but...

When your child misses just...

they miss weeks per year

and years over their school life

**1** day per fortnight



**4** weeks

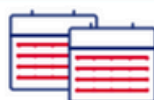


Over **1** year missed

**1** day per week



**8** weeks



Over **2.5** years missed

# EVERY DAY COUNTS...

**A day here or there doesn't seem like much, but...**

When your child misses just...	that equals...	which is...	and therefore, from Kindy to Year 12, that is...	This means that the best your child can achieve is...
1 day each fortnight	20 days per year	4 weeks per year	Nearly 1 ½ a years of school	Equal to finishing Year 11
1 day a week	40 days per year	8 weeks per year	Over 2 ½ years of school	Equal to finishing Year 10
2 days a week	80 days per year	16 weeks per year	Over 5 years of learning	Equal to finishing Year 7
3 days a week	120 days per year	24 weeks per year	Nearly 8 years of learning	Equal to finishing Year 4

*Give your child every chance to succeed...*

**Every day counts!**



# Every Minute Counts...

When your child misses just...	that equals to...	which is...	and therefore, from kindy to Year 12, that is...
10 minutes a day	50 minutes of learning each week	Nearly 1 ½ weeks per year	Nearly ½ a year of school
20 minutes a day	1 hour and 40 minutes of learning each week	Nearly 2 ½ weeks per year	Nearly a year of school
½ hour a day	½ a day of learning a week	4 weeks a year	Nearly 1 ½ years of learning
1 hour each day	1 whole day of learning each week	8 weeks per year or nearly a term a year	Over 2 ½ years of learning

***Your child's best learning time is at the beginning of the day...***

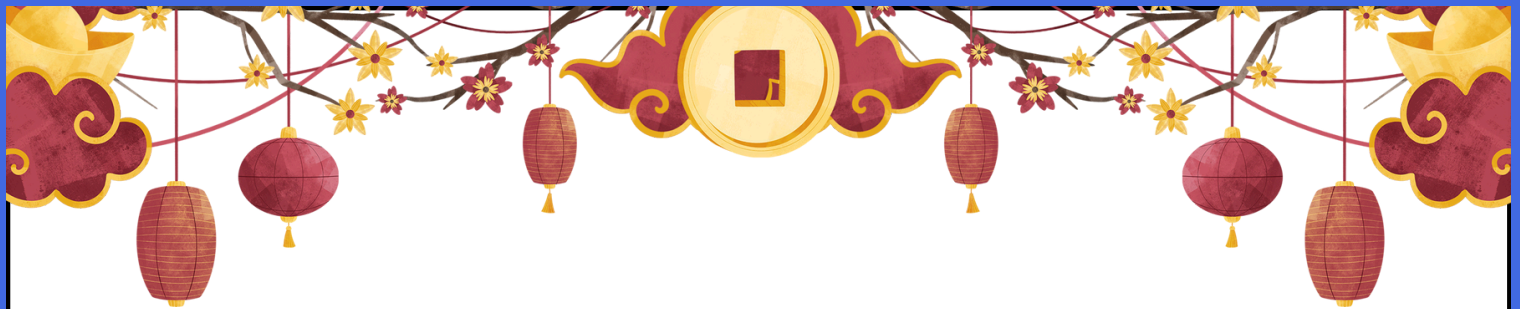
**Check the time your school starts.  
DON'T BE LATE!**



# STUDENT SHOUT OUT!

Last weekend, Lukeman (65F) attended the Regional Championship for Discus. He had managed to finish on the podium where he threw 25.92 metres. Lukeman will be proceeding to the state championship next month. Good luck Lukeman!

If your child has a noteworthy achievement that you would like shared with the school, please send a message and a photo to your child's class teacher. We love celebrating our students' successes!



THANK YOU! to all the parents who joined us for our annual Lunar New Year celebration this week. We loved the lion dancing performances! Click anywhere to see more photos from the day!



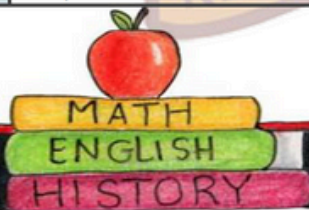


# KINDERGARTEN TERM 1 OVERVIEW



Please find below an outline of your child's learning this term in Kindergarten:

KLA	UNITS AND CONTENT
ENGLISH	<b>PHONOLOGICAL AWARENESS:</b> syllable, word and rhyme awareness, alliteration, onset and rime, initial/medial/final sound <b>PHONICS:</b> s,a,t p,i,n c,k,e,h r,m,d g,o,u l,f,b <b>TRICKY WORDS:</b> blue tricky words (I, the, me, we, to, he, was, do, she, are, be, all) <b>SPEAKING + LISTENING:</b> communicating through read alouds <b>WRITING:</b> pre-writing skills, sentence structure, writing simple sentences using phonic knowledge
MATHS	<b>NUMBER:</b> Working mathematically, Whole Numbers, Addition and Subtraction, Patterns, Equal Groups <b>MEASUREMENT:</b> Position, Length, 2D Shapes, Mass, Time
HISTORY	People have lived in the past: Aboriginal Peoples are Connected to Country
SCIENCE	Earth and Space: Seasons and Weather
PDHPE	Berry Street - Body: Understanding our Emotions School Sport
CAPA	Visual Art Music - Simple speech, singing, playing and moving activities, creating rhymes, games, songs and simple compositions.

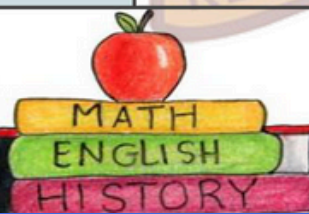


# STAGE 1 TERM 1 OVERVIEW



Please find below an outline of your child's learning this term in Years 1 and 2:

KLA	UNITS AND CONTENT
ENGLISH	<b>READING:</b> Reading Groups, Decodables, PM Readers, DEAR <b>WRITING:</b> Textual Concept: Narrative + Character + Imagery <b>SPELLING:</b> Weekly spelling worksheet, Phonics, Reading Eggs /Reading Eggspress
MATHS	<b>NUMBER &amp; ALGEBRA:</b> Whole Number, Addition, Subtraction, Multiplication, Division, Fractions <b>MEASUREMENT &amp; SPACE:</b> Position, Angles, Time, Length, Mass, Area, Volume, 2D Space, 3D Objects <b>STATISTICS &amp; PROBABILITY:</b> Data
HISTORY	Aboriginal Peoples have rich and diverse Cultures and Histories
SCIENCE	Earth and Space - Look up and Around
PDHPE	Berry Street - Body: understanding our emotions School Sport Swimming Carnival (8yr olds / competitors only)
CREATIVE & PERFORMING ARTS	Art - People learn about the past by engaging with stories, images, objects and sites Music - Performing and organising sound





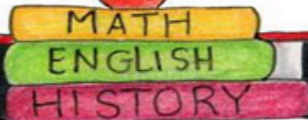
## STAGE 2

### TERM 1 OVERVIEW



Please find below an outline of your child's learning this term in Years 3 and 4:

KLA	UNITS AND CONTENT
ENGLISH	<b>READING:</b> Guided Reading Groups, Naplan texts, Independent Reading, Grammar, DEAR <b>WRITING:</b> Narrative and Persuasive <b>Textual Concepts:</b> Narrative + character, Imagery, symbol & connotation <b>SPEAKING &amp; LISTENING:</b> <b>SPELLING:</b> Reading Eggs
MATHS	<b>NUMBER &amp; ALGEBRA:</b> Whole Number, Addition, Subtraction, Multiplication, Division, Fractions, Decimals <b>MEASUREMENT &amp; SPACE:</b> Position, Angles, Time, Length, Mass, Area, Volume, 2D Space, 3D Objects <b>STATISTICS &amp; PROBABILITY:</b> Chance, Data
HISTORY	Aboriginal peoples have the oldest living continuous Cultures in the world
SCIENCE	Earth and Space - The sun, Earth and Moon
PDHPE	PSSA Gala Days School Sport Swimming Carnival - competitors only Berry Street
CREATIVE & PERFORMING ARTS	Art - History uses sources to construct narratives of the past Music - Performing, listening and composing sound



## STAGE 3

### TERM 1 OVERVIEW



Please find below an outline of your child's learning this term in Years 5 and 6

KLA	UNITS AND CONTENT
ENGLISH	<b>READING:</b> Comprehension, Grammar, NAPLAN texts, Novel studies, Oral reading fluency, DEAR <b>WRITING:</b> Narrative and Persuasive <b>Textual Concept:</b> Narrative <b>SPELLING:</b> Reading Eggs
MATHS	<b>NUMBER &amp; ALGEBRA:</b> Whole Number, Addition, Subtraction, Multiplication, Division, Fractions and Decimals <b>MEASUREMENT &amp; SPACE:</b> 2D Space, 3D Objects, Angles, Position, Length, Volume, Capacity, Area, Mass, Time <b>STATISTICS &amp; PROBABILITY:</b> Chance, Data
HISTORY	Aboriginal Peoples have diverse languages
SCIENCE/TECHNOLOGY	How does the Earth compare to other planets in the Solar System?
PDHPE	PSSA Gala Days School Sport Swimming Carnival - competitors only Berry Street
CREATIVE & PERFORMING ARTS	Art - Historical Sources present perspectives on the past Music - Elements of Music

