

Return to school Level 3 plus

Information current as at 7 October 2021

Developed in partnership with NSW Health



What we'll cover in this session

Term 4 return to school



- Key dates
- COVID-safe practices at our school
- Vaccinations
- Questions and answers

Department preschools,
Kindergarten & Year 1

18
October

All other years

25
October

What you need to know about our return to school in Term 4

We're excited about our return to face-to-face learning and welcoming students and staff back onsite where we know the best learning happens.

We are taking a layered-approach to ensuring our school is safe for our staff and students.

Our guidance was developed with NSW Health and is evidence-based to give us multiple layers of protection.

COVID-safe operations for schools

Department preschools, Kindergarten & Year 1	All other years	
18 October	25 October	
		
		

Key dates for our staged return

It's important that we stick to the staged return to give us time to be ready to welcome back students onsite. Students will return to face-to-face learning in the following order:

- from 18 October – department Kindergarten and Year 1 students return.
- from 25 October – all remaining year groups (Years 2, 3, 4, 5 and 6 return.)



Primary school students return

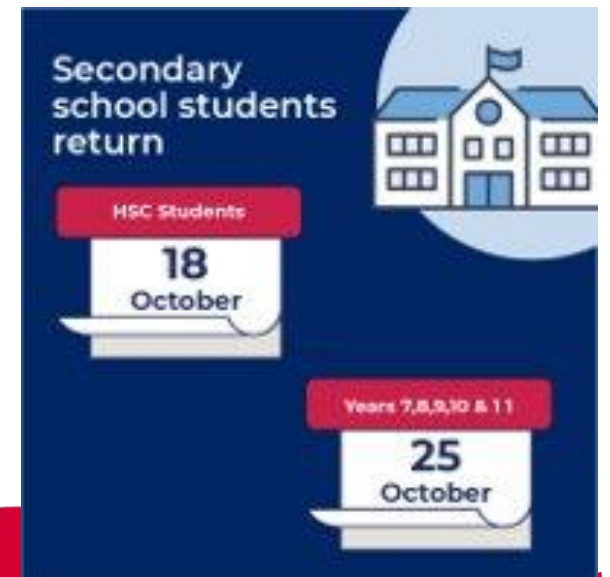
Department preschools, Kindergarten & Year 1

18 October

Years 2, 3, 4, 5 & 6

25 October

The infographic features a dark blue background with a white school building icon in a light blue circle on the right. Two white calendar-style date cards are shown: one for 18 October and another for 25 October. Red banners above the dates specify the student groups: 'Department preschools, Kindergarten & Year 1' for the 18th and 'Years 2, 3, 4, 5 & 6' for the 25th.



Secondary school students return

HSC Students

18 October

Years 7, 8, 9, 10 & 11

25 October

The infographic features a dark blue background with a white school building icon in a light blue circle on the right. Two white calendar-style date cards are shown: one for 18 October and another for 25 October. Red banners above the dates specify the student groups: 'HSC Students' for the 18th and 'Years 7, 8, 9, 10 & 11' for the 25th.

Vaccinations

COVID-19 vaccination is the best protection against severe illness and also reduces the risk of spreading it to others.

All staff required on site supporting the return to school are fully vaccinated.

Then from 8th November all contractors on a school site will need to be fully vaccinated.



Keeping student groups together



As we return to school students will be kept in their cohorts to minimise opportunities for transmission of COVID-19 and to enable effective contact tracing and containment.

This means minimising interaction between students on school grounds and keeping cohorts together where possible.

There are five different playground areas for grades or stages: K, Yr One, Yr Two, Stage 2-Years 3&4, Stage 3-Years 5&6.

There will be two separate play times with K-2 recess and lunch at one time and 3-6 at a later time to minimize interactions. Staff are also kept to a minimum interaction with consistent staff in consistent classrooms and on playground duties.

Mask wearing for students and staff



Masks

Masks will be required for all staff and all students

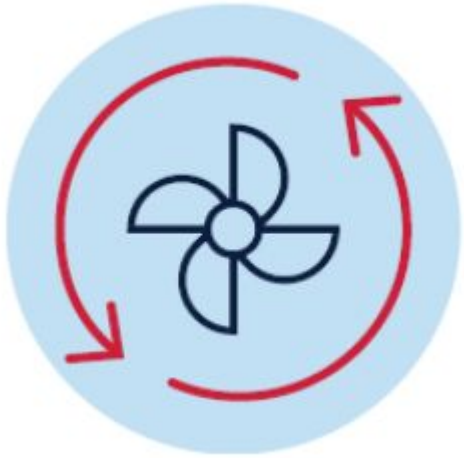
in Year 7 and above while they are indoors and outdoors on school sites unless eating or exercising.

Masks are strongly recommended for primary students both indoors and outdoors unless eating or exercising.

Students should bring their own masks where possible, but schools will have back-up supplies just in case. Masks are also required for all travel on public transport for children 13 years and older.

Masks are required to be worn on school site by staff indoors and outdoors and strongly recommended for students indoors and outdoors unless exercising or eating.

Ventilation



Having open or well-ventilated spaces reduces the risk of transmission of COVID-19 because infectious particles are more quickly diffused in the open air.

The air con filters have all been cleaned and fans are operational.

School activities

During Term 4 many school-based activities will remain on hold until NSW Health advise otherwise.

This includes large celebrations like assemblies, presentation days and farewells. If NSW Health advice changes, then we will let you know about changes as soon as possible.

We are already organizing contingency plans, just in case.

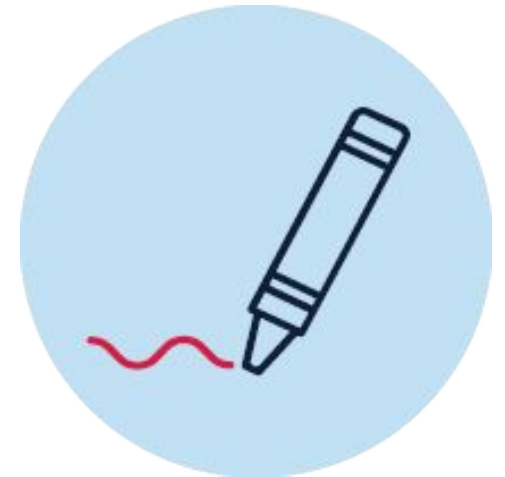


Orientation and transition to school

Onsite orientations and transition programs are not currently allowed in person on school sites until we are advised differently by NSW Health.

Kinder transition through Ready, Set, Go facilitated by Mrs Hofmeier has been operational since early term three.

Further advice on high school transition programs will be forthcoming.



Further information and questions

All of our students are expected to be back at school for their staggered return dates. After this date we will only be supporting learning from home where this is required by NSW Health to do so.

Parents and students will be notified if a decision is made to close the school due to a confirmed case of COVID-19. During this time we will continue to provide learning from home activities and we will let you know when we can return to face-to-face learning. We will use Dojo and SMS to notify parents.

Find updated information on the department's Advice for families page to support students who are anxious about the return to school – or get in touch with us directly.

<https://education.nsw.gov.au/covid-19/advice-for-families>

Thank you for your continual support and assistance.